

## ROOM ACCOMMODATIONS

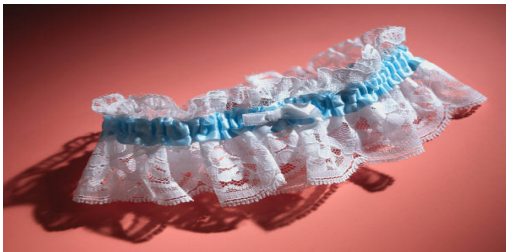
**Cottages 1, 3, 5:** (3-PLEX UNITS) Each unit has 3 individual guest rooms with standard rooms on each end and a large kitchenette room in the center. These units can be used as connecting rooms by the interior doors to comprise a suite. Each room has a full bath.

**Cottages 2 & 4:** (4-PLEX UNITS) Each unit has 4 individual guest rooms with a small kitchenette being one of the 4 rooms. The kitchenette and a standard room can be used as a suite with an interior connecting door. The end rooms are standard rooms that do not have connecting interior doors. Each room has a full bath.

**Vacation Home:** A two-story home divided into two separate levels. Each level is set up as a two bedroom home. The levels can be used separately or adjoining. Each level sleeps 8 persons and each has a full bath.

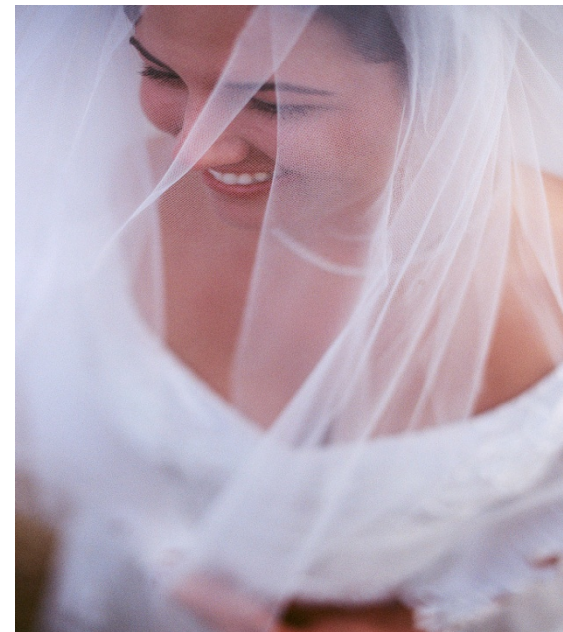
**Dry Cabins:** All four cabins have electricity, heat/AC, bed linens provided, and sleep 8 people. No bathrooms. The shower & restrooms are just a short way from the cabins. Guests provide their own towels.

**Log Cabins:** These are two bedroom units in a secluded area with a view of Elk Creek Valley surrounded by trees, wildlife, and rolling hills. Each unit sleeps 6 people and has a bathroom with shower, no tub.



## ELK CREEK RESORT

# 2021



Let Us Assist You in Making Your  
Special Day One that You Will  
Remember Always!!!

# Wedding

Elk Creek Resort offers you a wedding day in the outdoors. Wedding locations are \$350/day. Extra chairs can be provided for a cost of \$2 each. We have two unique wedding locations:

\*Petrified Forest – Located in the Petrified Forest, the outdoor chapel overlooks Elk Creek Valley and is surrounded by beautiful pine trees. Benches seat 60.

\*Back 6 – Located in Elk Creek Resort's Deerview area, the Back 6 is located in a secluded meadow surrounded by trees and a small creek.

# Reception

Elk Creek Lodge, Patio, and Bar offers a country lodge atmosphere. Capacity: 200+ people.

Lodge & Patio - \$1500.00

Bar (with bartender) \$350.00

Rehearsal \$500.00 (6hrs) with full day Lodge Rental

Commercial Kitchen \$80-\$250

The Lodge has a large dining room/lounge area w/fireplace, game room with piano, restrooms, satellite radio, banquet tables & chairs and a large covered patio with picnic tables. Catering options available upon request.

The Bar is a full service cash bar. Our staff can serve your party with beer, wine, or mixed drinks. No outside alcoholic beverages are allowed on the premises and you are not allowed to serve yourself.

# Catering

Whether you're considering down home BBQ fare, sophisticated dinner entrees or anything in between, we can offer in-house catering or a list of state-certified local businesses available to cater your event. You are also welcome to bring your own catering if you wish.

# Reservations

To make your reservation, a deposit of 50% is due at the time of booking, with the balance due within 90 days of the event date. Cancellations 3 months or more before the event is scheduled will get a refund of 75% of the deposit. Cancellations less than 3 months before the event is scheduled will get no refunds.

Ask about our off-season rates, effective October 31st thru April 31st!

**Elk Creek Resort & Campground**  
**8220 Elk Creek Road**  
**Piedmont, SD 57769**

**605-787-4884 or 800-846-2267**

**FAX: 605-787-6477**

**[www.elkcreekresort.net](http://www.elkcreekresort.net)**

**E-Mail: [info@elkcreekresort.net](mailto:info@elkcreekresort.net)**