

ROOM ACCOMMODATIONS

Cottages 1, 3, 5: (3-PLEX UNITS) Each unit has 3 individual guest rooms with standard rooms on each end and a large kitchenette room in the center. These units can be used as connecting rooms by the interior doors to comprise a suite. Each room has a full bath.

Cottages 2 & 4: (4-PLEX UNITS) Each unit has 4 individual guest rooms with a small kitchenette being one of the 4 rooms. The kitchenette and a standard room can be used as a suite with an interior connecting door. The end rooms are standard rooms that do not have connecting interior doors. Each room has a full bath.

Vacation Home: A two-story home divided into two separate levels. Each level is set up as a two bedroom home. The levels can be used separately or connecting. Each level sleeps 8 persons and each has a full bath.

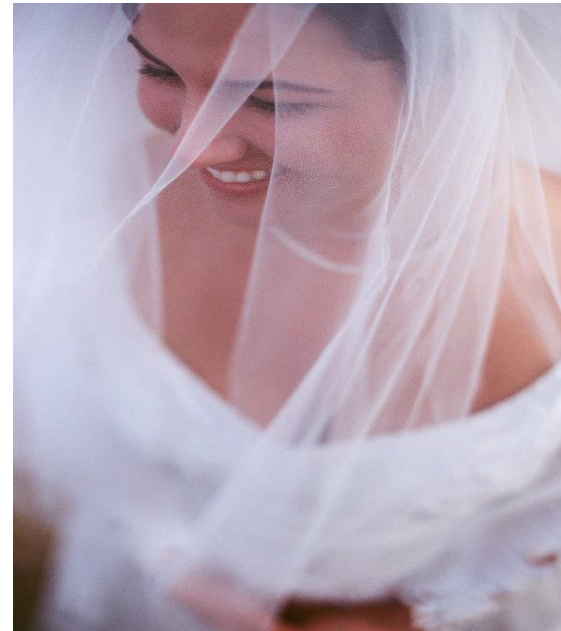
Dry Cabins: All four cabins have electricity, heat/AC, bed linens provided, and sleep 8 people. No bathrooms. The shower & restrooms are just a short way from the cabins. Guests provide their own towels.

Log Cabins: These are two bedroom units in a secluded area surrounded by trees, wildlife, and rolling hills. Each unit sleeps 6 people and has a bathroom with shower, no tub.



ELK CREEK RESORT

2023



Let Us Assist You in Making Your Special Day One that You Will Remember Always!!!

Wedding

Elk Creek Resort offers you a wedding day in the outdoors. Wedding locations are \$400/day. Extra chairs can be rented at a cost of \$2 each, and set up for an additional \$2 per chair. We have three unique wedding locations:

***Petrified Forest – Located in the Petrified Forest, the outdoor chapel overlooks Elk Creek Valley and is surrounded by beautiful pine trees. Benches seat 60.**

***Deerview Meadow – Located in Elk Creek Resort's Deerview area, the Deerview Meadow offers a romantic backdrop featuring a majestic oak tree and picturesque pond setting.**

***Back 6 – Located in Elk Creek Resort's Deerview area, the Back 6 has a quaint running creek surrounded by a densely wooded and shady area.**

Reception

Elk Creek Lodge, Patio, and Bar offers a country lodge atmosphere. Capacity: 200+ people.

Lodge & Patio - \$1600.00

Bar (with bartender) \$350.00

Rehearsal \$600.00 (6hrs) with full day Lodge Rental

Commercial Kitchen \$100-\$300

The Lodge has a large dining room/lounge area w/fireplace, game room with piano, restrooms, satellite radio, banquet tables & chairs and a large covered patio with picnic tables. Catering options available upon request.

The Bar is a full service cash bar. Our staff can serve your party with beer, wine, or mixed drinks. No outside

alcoholic beverages are allowed on the logde, patio and pool premises and you are not allowed to serve yourself.

Catering

Whether you're considering down home BBQ fare, sophisticated dinner entrees or anything in between, we offer a list of state-certified local businesses available to cater your event. You are also welcome to bring your own catering if you wish.

Reservations

To make your reservation, a deposit of 50% is due at the time of booking, with the balance due within 90 days of the event date. Cancellations 3 months or more before the event is scheduled will get a refund of 75% of the deposit. Cancellations less than 3 months before the event is scheduled will get no refunds.

Ask about our off-season rates, effective October 31st thru April 31st!

Elk Creek Resort & Campground
8220 Elk Creek Road
Piedmont, SD 57769
605-787-4884

www.elkcreekresort.net

E-Mail: info@elkcreekresort.net