

## ROOM ACCOMMODATIONS

**Cottages 1, 3, 5:** (3-PLEX UNITS) Each unit has 3 individual guest rooms with standard rooms on each end and a large kitchenette room in the center. These units can be used as connecting rooms by the interior doors to comprise a suite. Each room has a full bath.

**Cottages 2 & 4:** (4-PLEX UNITS) Each unit has 4 individual guest rooms with a small kitchenette being one of the 4 rooms. The kitchenette and a standard room can be used as a suite with an interior connecting door. The end rooms are standard rooms that do not have connecting interior doors. Each room has a full bath.

**Vacation Home:** A two-story home divided into two separate levels. Each level is set up as a two-bedroom home. The levels can be used separately or connecting. Each level sleeps 8 persons and each has a full bath.

**Dry Cabins:** All four cabins have electricity, heat/AC, bed linens provided, and sleep 8 people. No bathrooms. The shower & restrooms are just a short way from the cabins. Guests provide their own towels.

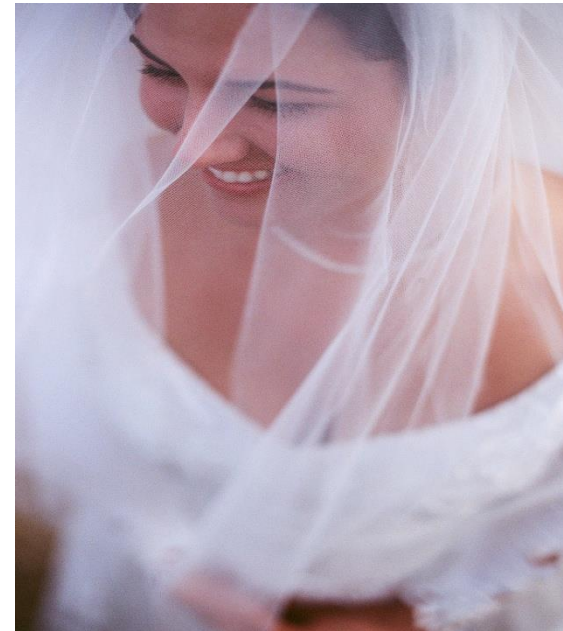
**Log Cabins:** These are two-bedroom units in a secluded area surrounded by trees, wildlife, and rolling hills. Each unit sleeps 6 people and has a bathroom with shower, no tub.



ELK CREEK RESORT

2025

05-01-25 to 09-30-25



Let Us Assist You in Making Your Special Day One that You Will Remember Always!!!

Wedding

Elk Creek Resort offers you a wedding day in the outdoors. Wedding locations are \$550/day. Extra chairs can be rented at a cost of \$2 each, and set up for an additional \$3 per chair. We have three unique wedding locations:

**\*Petrified Forest – Located in the Petrified Forest, the outdoor chapel overlooks Elk Creek Valley and is surrounded by beautiful pine trees. Benches seat 60.**

**\*Deerview Meadow – Located in Elk Creek Resort's Deerview area, the Deerview Meadow offers a romantic backdrop featuring a majestic oak tree and picturesque pond setting.**

**\*Back 6 – Located in Elk Creek Resort's Deerview area, the Back 6 has a quaint running creek surrounded by a densely wooded and shady area.**

## Reception

Elk Creek Lodge, Patio, and Bar offers a country lodge atmosphere. Capacity: 200+ people.

Refundable security deposit	\$ 500.00
Lodge & Patio -	\$1750.00
Bar (with bartender)	\$ 425.00
Rehearsal supper with full day Lodge Rental	\$ 660.00 (6hrs)
Commercial Kitchen	\$ 400.00

The Lodge has a large dining room/lounge area w/fireplace, game room with piano, restrooms, satellite radio, 20 banquet tables and 3 round tables; 140 chairs and a large covered patio with 10 picnic tables. Catering options available upon request.

## Bar

The Bar is a full-service cash bar. Our staff can serve your party with beer, wine, or mixed drinks. No outside alcoholic beverages are allowed in the lodge, on the patio and or on pool premises.

## Catering

Whether you're considering down home BBQ fare, sophisticated dinner entrees or anything in between, we offer a list of state-certified local businesses available to cater your event. You are also welcome to bring your own non-alcoholic refreshments or food if you are renting the lodge day of wedding. If you serve food on the patio or lodge the night of rehearsal that requires a rental fee.

## Reservations

To make your reservation, a deposit of 50% is due at the time of booking, with the balance due 90 days prior to the event. Any event that is scheduled under the 90 days will be collected in full at time of the reservation. Entry will not be allowed into any ECR venue or facility until the event has been paid in full. Cancellations 3 months or more before the event is scheduled will get a refund of 75% of the deposit. Cancellations less than 3 months before the event is scheduled will get no refunds.

Ask about our off-season rates, effective October 1st thru April 31st!

**Elk Creek Resort & Campground**  
**8220 Elk Creek Road**  
**Piedmont, SD 57769**  
**605-787-4884**

**[www.elkcreekresort.net](http://www.elkcreekresort.net)**

**E-Mail: [info@elkcreekresort.net](mailto:info@elkcreekresort.net)**